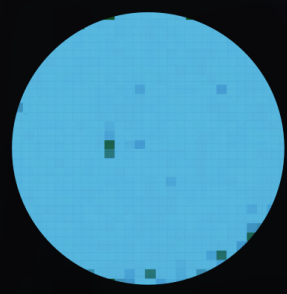
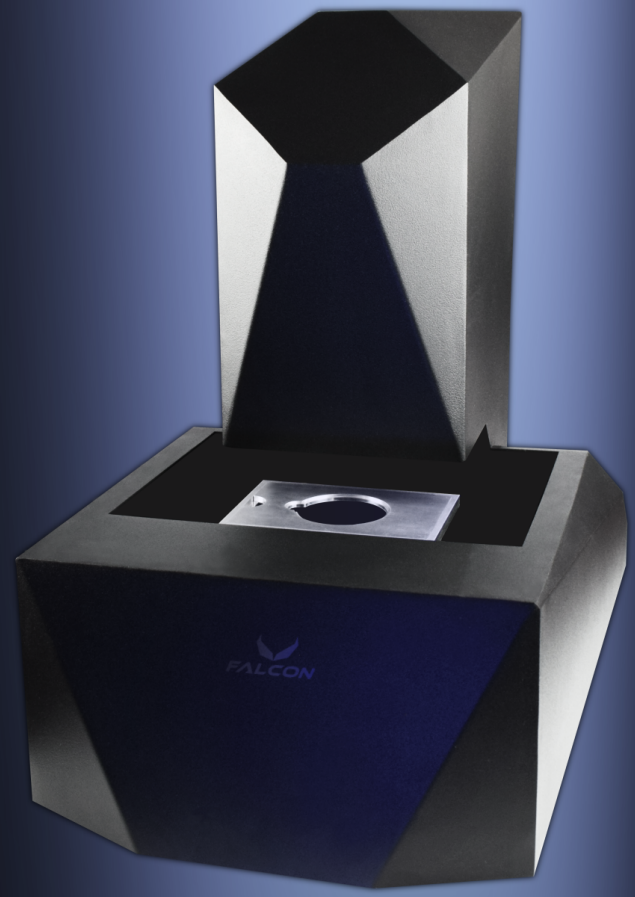




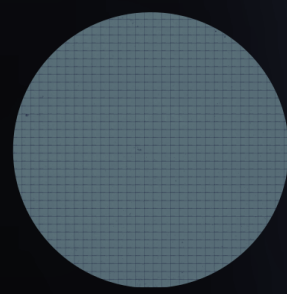
3D SURFACE INSPECTION SYSTEM

Advanced mapping and analysis

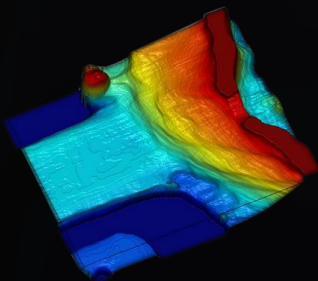
- 3D microimaging
- Surface micrometrology
- Structure metrology
- Particle sizing
- Bioimaging
- Gigapixel imaging
- 2D/3D image stitching
- 3D profilometry
- 2D/3D roughness
- Metallurgical imaging



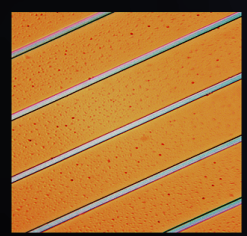
Surface defectivity map



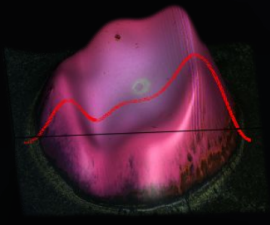
Gigapixel image



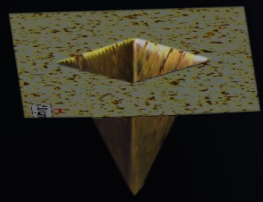
Microchannel topography



Calibration sample



Surface topography



Hardness analysis profile

Specifications

- Bright & Dark Field (Epi&Trans) Imaging
- Axial imaging resolution (>202 nm)
- Particle count limit ($<10^8$ ct/cm²)
- Large area mapping (2"-6" sample size)
- Autolevelling with autofocus
- Auto/Manual image stitching
- 3D measurement and depth profiling
- 3D/2D surface roughness measurement
- Grain, nodularity and hardness analysis
- Steel inclusion analysis and measurement
- Network & Cloud connectivity
- 3 axes Joystick control with action button
- Remote control & robotic integration
- Motorized objective turret
- Vacuum & magnetic sample chuck
- Clean room compatible (Class 100)

Support & Warranty

- Coverage includes:
 - Full coverage & software upgrades
- Coverage access times:
 - GLOBAL (Remote:24hrs, Technician: Contact the local office)
 - EU (Remote: 12hrs, Technician: 72 hrs)

