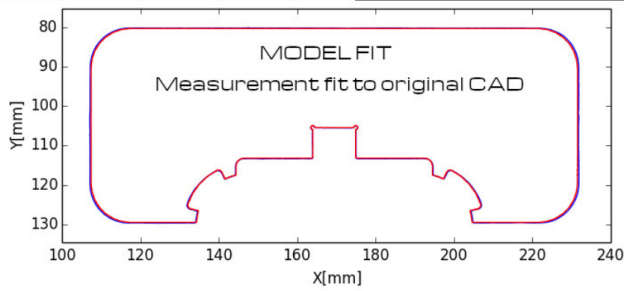
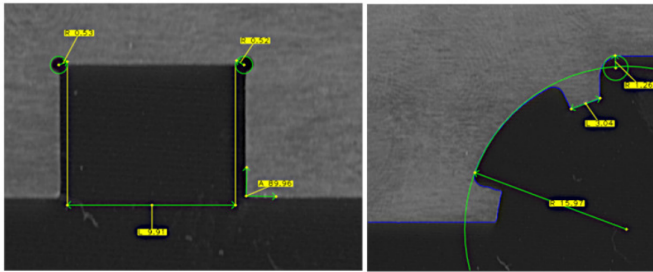


# D2

## DIGITAL CALIPER

### 2D Large Area Part Metrology

D2 is two-dimensional all digital caliper based industrial measurement tool enabling high precision and fast measurement on geometries which is not possible using conventional digital calipers.



### Specifications

- Fully automated 2D part scanning and measurement
- Up to 200\*290 mm scan and measurement area
- 15 micrometer scan resolution
- Measurement time less than 2 minutes
- Manual measurement modes: L, A, V, R, Ang, vs.
- Automated pattern recognition
- Model and measurement comparison
- Model loading from CAD space
- Part tracking during mass production
- Spectral illumination for different sample colors
- Light sealed compartment for consistent operation

### Support & Warranty

- One year full warranty including software updates
- Warranty extension up to 7 years
- Remote tech support within 24hrs (Global) 12hrs (EU)

## REVERSE ENGINEERING



D2 provides accurate metrology measurements down to 10 micrometer dimensional resolution.



D2 converts any solid part into the CAD format at high resolution.



D2 compares the measurement to the original CAD design of the part.



D2 enables direct comparison between the inspected part and reference sample part and reports differences.



D2 connects to database/cloud server and keeps track of the measurements.