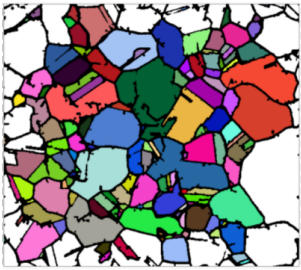


AUTOMET

METALLURGY

GRAIN+

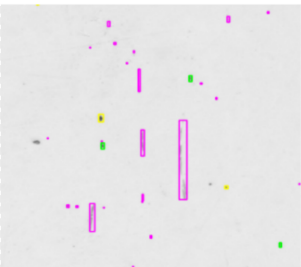
Grain size measurement and analysis software



- Standards: Grain size analysis according to ASTM E112/E1382 Standard Test Method
- Test methods: Determination of grain size with intercept count, average grain area, individual grain area, and planimetric methods
- Auto-detection: Auto grain/grain boundary detection with advanced filtering and enhancement features
- Auto-acquisition: Compatible with PSARON HTI systems for automated image acquisition
- Custom reports: Reporting in Excel format (optional company-specific report format)

STEEL-i

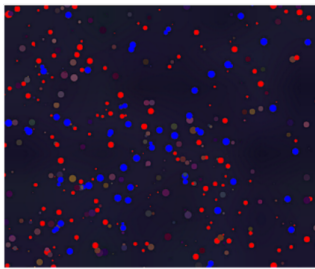
Non-metallic inclusion content rating software



- Standards: Non-metallic inclusion content rating according to EN 10247, ASTM E45, ISO 4967, DIN 50602 standards.
- 6 samples at a time: Auto-measurement of up to 6 samples with a single touch
- Bakelite surface recognition: Metal zone of interest is automatically detected and imaged
- Re-inspection: During analysis, re-visitation of region of interest after analysis
- Custom reports: Standards-compatible reporting in excel format (optional company-specific report format available)

PAS

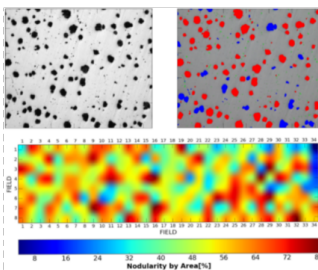
Particle measurement and analysis software



- Auto-detection: Automatic particle identification and filtering features
- Parameters: Inter-particle distance, particle density, particle size, diameter, area, aspect ratio, circumference, SF analysis
- Compatibility: Compatible with all image formats.
- Reporting: Specific reporting format defined by users in excel format
- Tracing Module: Optional particle tracking module for particle trajectory and velocity estimation and analysis

NODULA

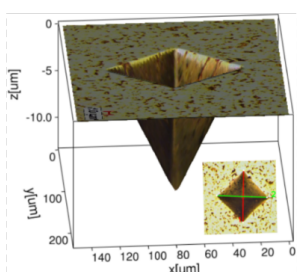
Cast iron nodularity analysis software



- Standards: Nodularity analysis according to ASTM E2567 Standard Test Method
- Graphites: Graphite particle detection based on intensity, Ferret's diameter and SF
- Parameters: Calculation of number, total size, total area and area fraction of nodular and graphite particles, nodularity by area, and nodule density
- Nodular Mapping: Wide-field-scanning nodularity analysis to obtain 2D nodularity map
- Mega-view: Visualization and variation of nodularity properties in all areas in a single view
- Reporting: Reporting in Excel format (optional company-specific report format available)

3DHT

3D hardness measurement software



- Hardness measurement: Hardness value from Vickers, Knoop, and Berkovich
- Measurement on any image: Compatible with all microscopes
- 3D modelling: High quality 3D modelling of indentation
- Indent profiling: Measurement of indent 3D depth, area, and volum profiles
- Reporting: Reports in excel format with 3D images (optional company-specific report format available)